

## GEM STATE PROSPECTOR



# GEM STATE PROSPECTOR

## DISCOVER THE GEM STATE AND MAKE SOUND DECISIONS THROUGH DATA.

Gem State Prospector clients are looking for commercial and industrial space to locate manufacturing facilities, food processing facilities, call centers, shared services centers, and professional office space. Not only are site selectors and business owners looking for property, they are also looking for information about your community and Gem State Prospector is a great source for this important information. **Below are instructions on how to get started.**

### How to register for an account:

Go to [www.gemstateprospector.com](http://www.gemstateprospector.com)

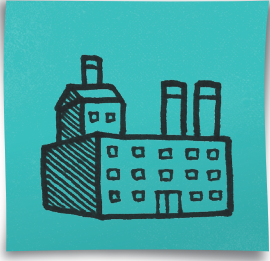
1. Click on Start Search.
2. Click on Add Properties.
3. Click on Access Request.
4. Complete the data fields and click Send Request.
5. An administrator of Gem State Prospector will approve the request and then you can start adding commercial or industrial properties to the system.

### How to add a commercial or industrial property to Gem State Prospector:

Go to [www.gemstateprospector.com](http://www.gemstateprospector.com)

1. Click on Start Search.
2. Click on Add Properties.
3. Click on Login and enter your user name and password.
4. On the blue menu bar click on Properties and then Add Property.
5. Complete the data fields; the more detailed information you provide the better your site will look to clients.
6. A marketing flyer can be created through Gem State Prospector with the data entered to include GIS mapping. You can upload additional supporting documents and realtor specific flyers to the account as well.

## RUNNING AT THE SPEED OF BUSINESS.



## GEM STATE PROSPECTOR



### What does Gem State Prospector provide?

Data is collected from multiple sources so that Idaho information can be found in one location. Go to [www.gemstateprospector.com](http://www.gemstateprospector.com). No login required.

#### 1. Available Sites

- You can look for existing buildings or available land.
- You can filter by square footage, acres, city or county, address or keyword.

#### 2. Demographic Analysis

- Research labor force, population, education attainment, businesses and employees by type of establishment for any city, county or metro in Idaho.
- Professional reports can be created and shared.

#### 3. Business Reports

- Use our business database to identify industry clusters and locate customers, competitors and suppliers.
- You can search by city, county or metro in Idaho.

#### 4. Mapping Idaho

- Build a custom map tailored to your needs. Visualize community assets, workforce and demographic data for Idaho communities.
- Map layers such as education, transportation, energy, broadband and local data.

#### 5. Compare Communities

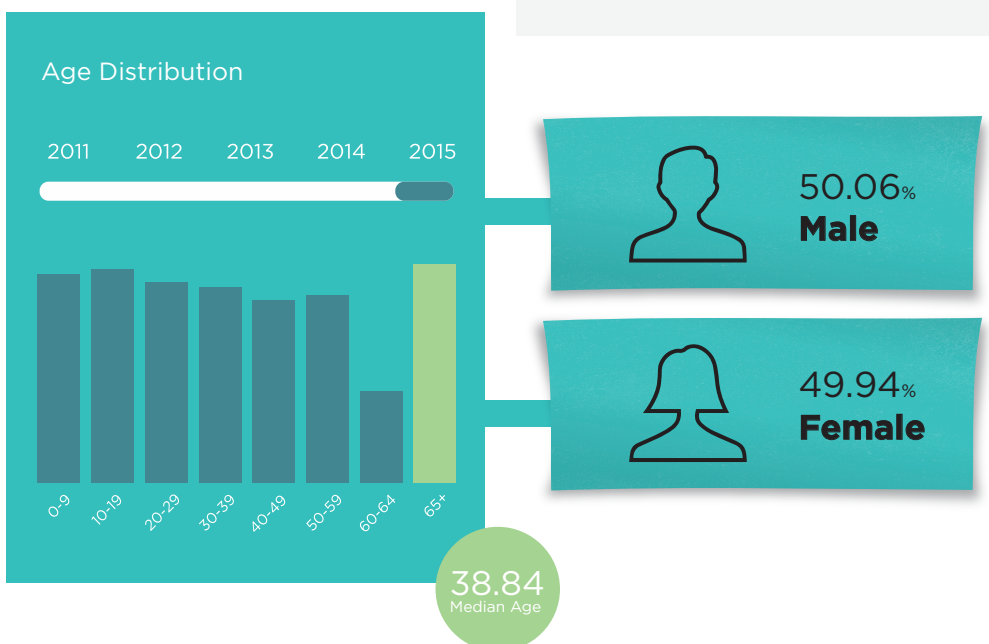
- Select a community in Idaho and compare it to any other community nationwide.
- The comparison will show population, workforce and education for each community.

#### 6. Community Profiles:

- View infographics that highlight community demographics such as population, education attainment, labor force, business and job breakdown, transportation and consumer spending.
- Below is a sample of the infographic.

##### Community Profile:

TOTAL POPULATION OF IDAHO  
**1.65M**



### WHERE DOES THE DATA COME FROM?

- Demographics, Labor Force, Consumer Expenditures - Provided by Applied Geographic Solutions; updated twice a year.
- Existing Businesses - Provided by InfoGroup/InfoUSA; updated quarterly.
- Wages - Provided by the Bureau of Labor Statistics; update annually.
- Community InfoGraphic - Provided by Applied Geographic Solutions (some of the analysis such as colleges, distance to interstate, airports, etc. is performed by GIS Planning); updated twice a year.
- Universities and Trade Schools - Provided by the National Center for Education Statistics.